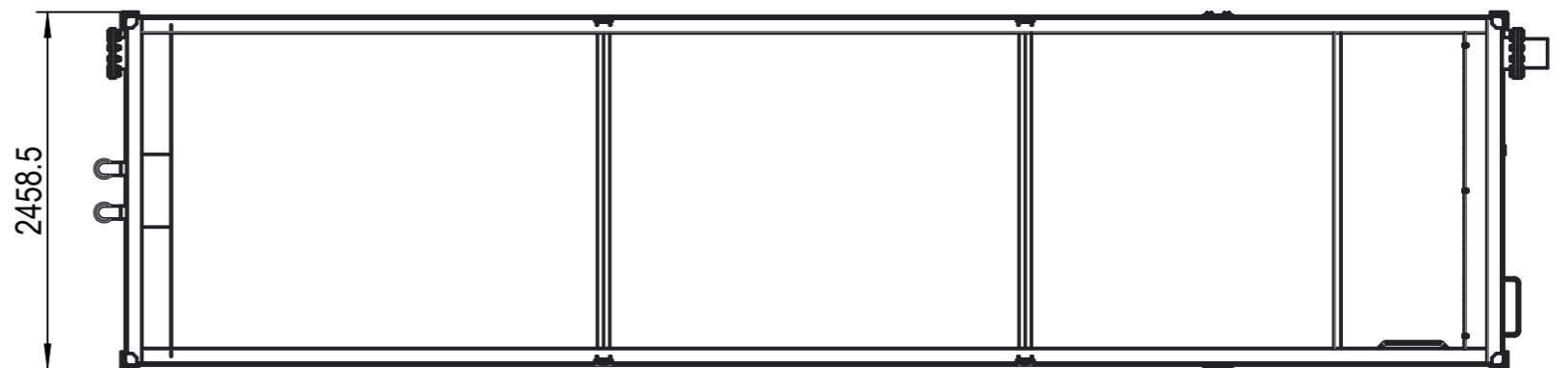
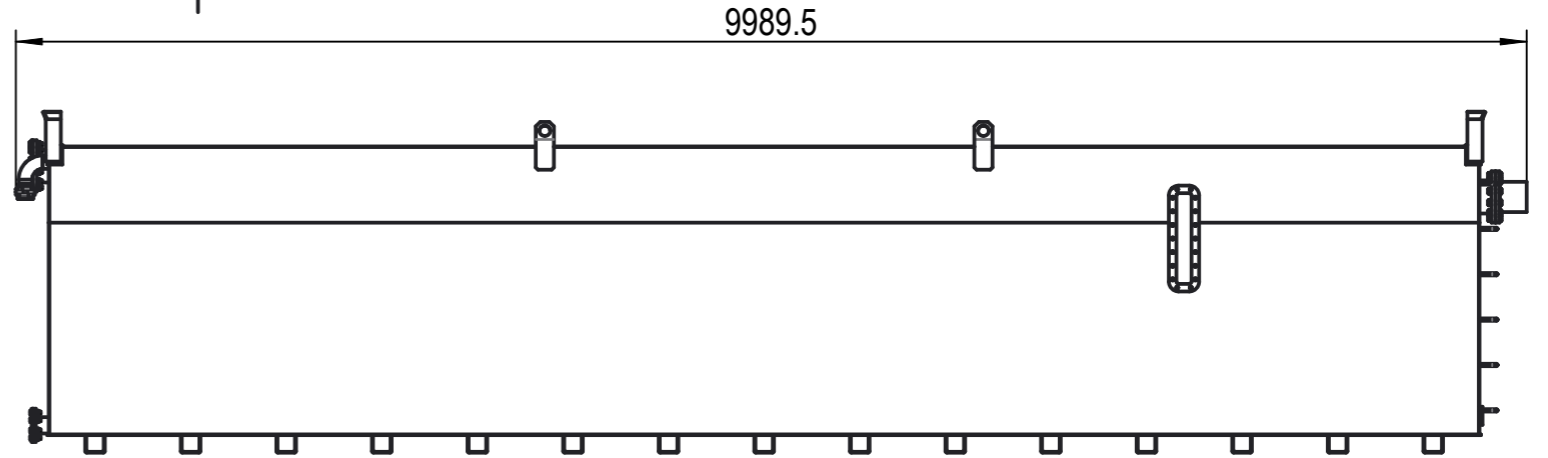
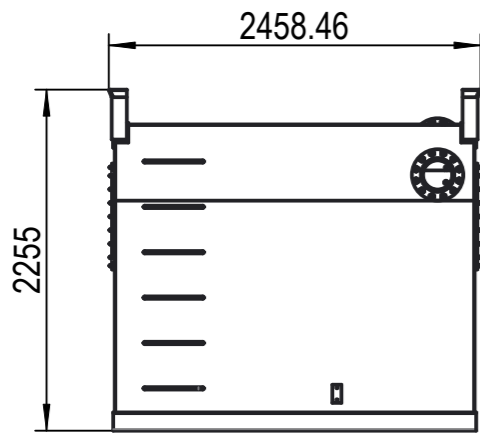


The reproduction, distribution and utilization of this document as well as the communication of its contents to others without express authorization is prohibited. Offenders will be held liable for the payment of damages. All rights reserved in the event of the grant of a patent, utility model or design. (Refer to protection notice ISO 18016.)
 Weitergabe sowie Vervielfältigung dieses Dokuments, Verwertung und Mitteilung seines Inhalts sind verboten, soweit nicht ausdrücklich gestattet. Zuwiderhandlungen verpflichten zu Schadensersatz. Alle Rechte für den Fall der Patent-, Gebrauchsmuster- oder Geschmacksmusterertragung vorbehalten. (Schutzvermerk ISO 18016 beachten.)



Transport Masse



ASB40

L x B x H (9989 x 2458 x 2255)

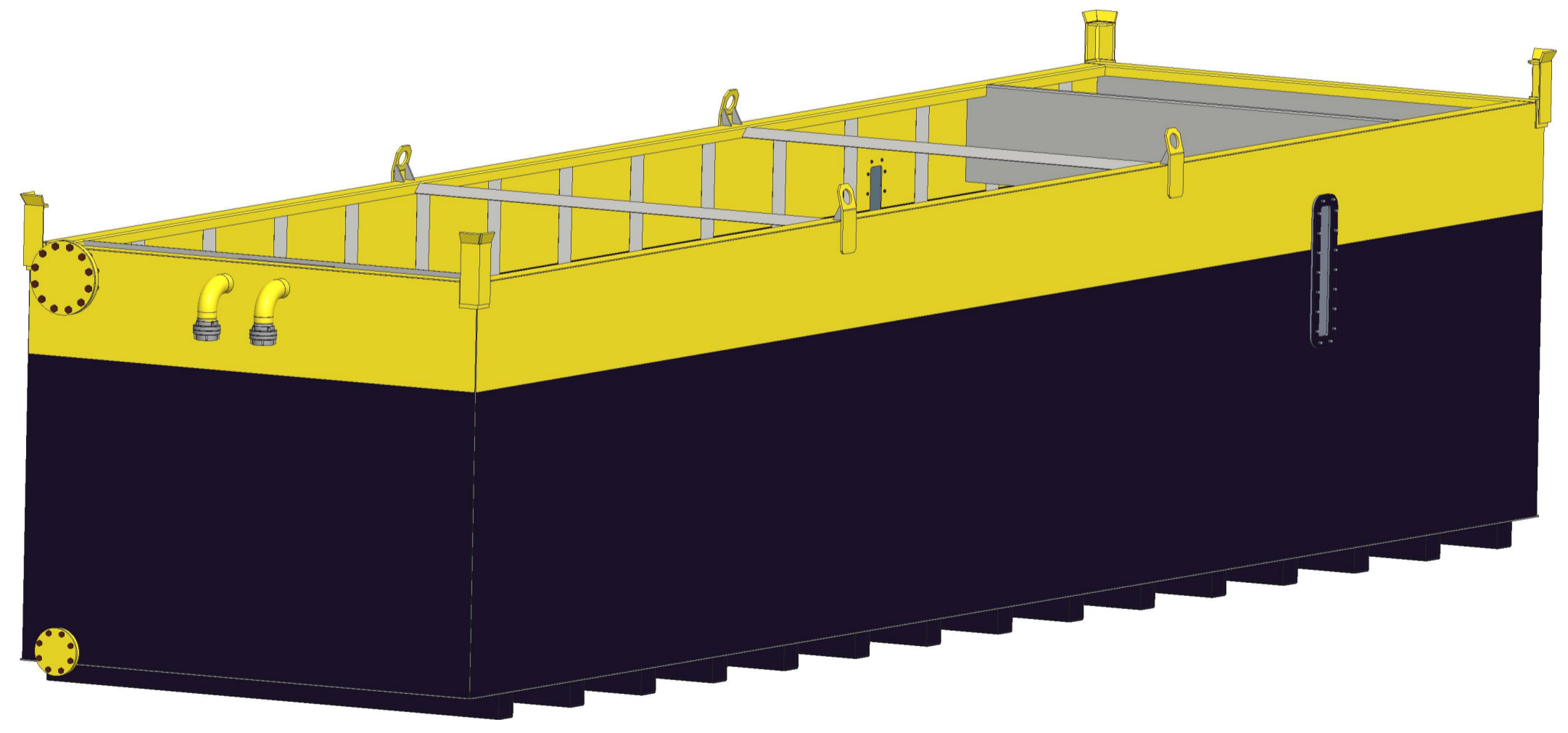
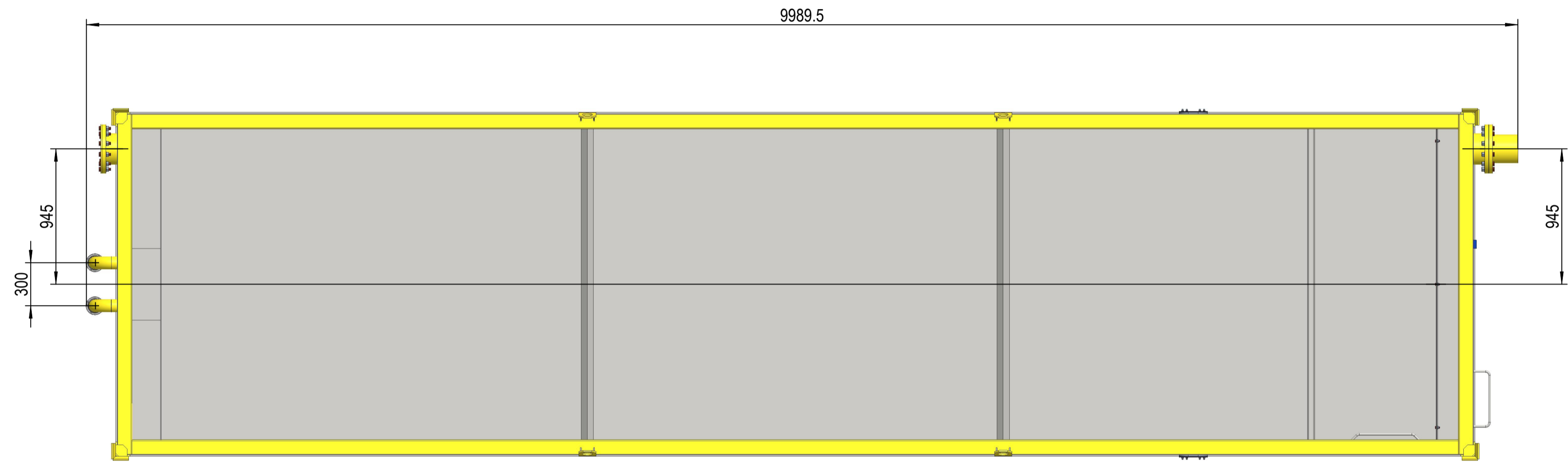
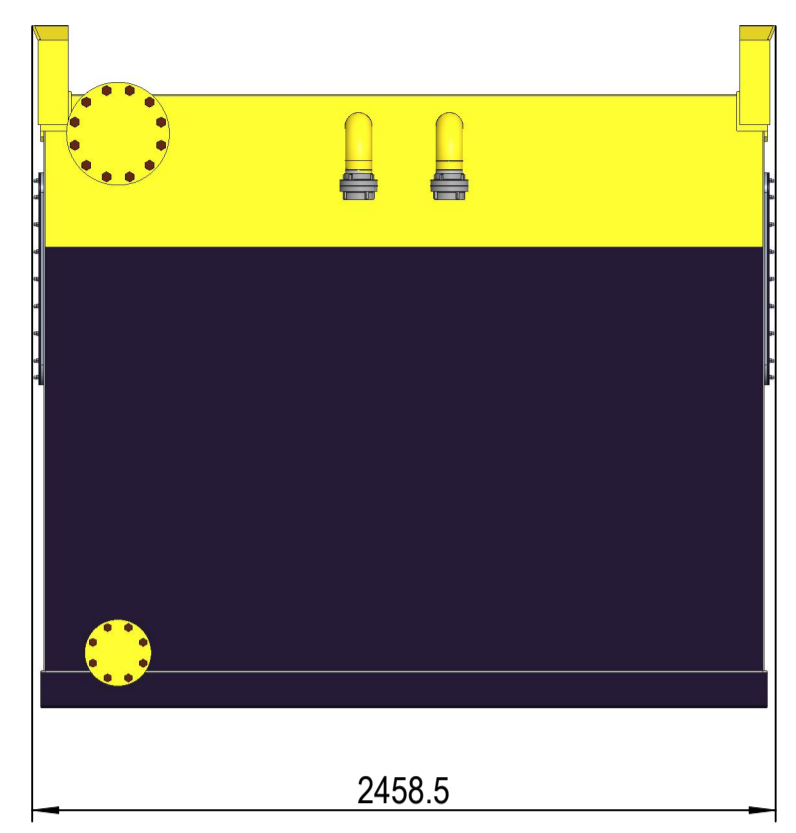
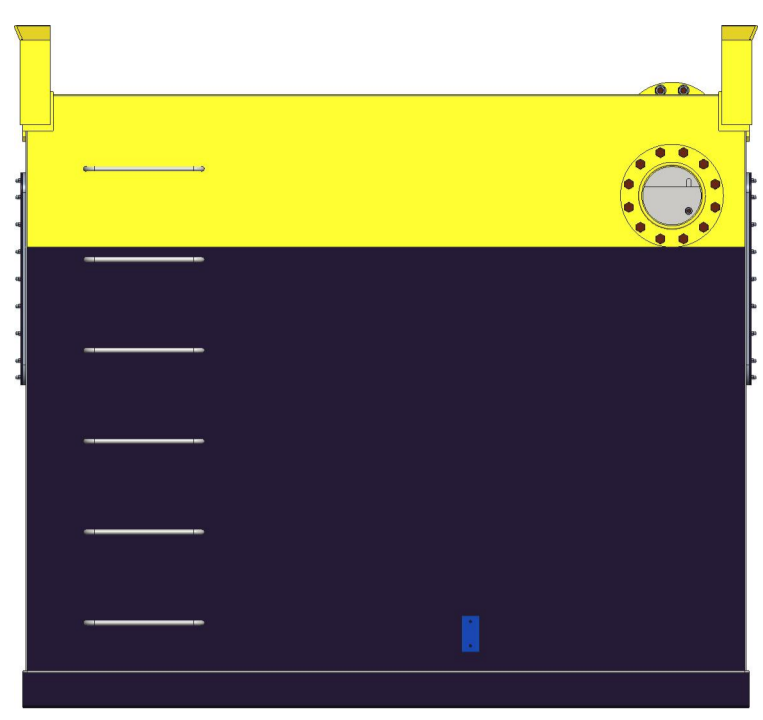
Gewicht

3600 Kg

A	-	11.03.2022	gde
n.a.	n.a.	n.a.	n.a.
n.a.	n.a.	n.a.	n.a.
Rev.	Änderung / Modifiche	Datum	Geändert

Material / Materiale	Gez. / Diseg.	13.10.2021	Geänd. / Modif.	11.03.2022	Freig. / Rilasc.	n.a.	Status	Wird bearbeitet	Rev.	A
	fab		gde		n.a.					
										
Benennung / Bezeichnung // Nome / Designazione Absetzbecken / - ASB40 / -									Gewicht / Peso 3533.345	
PI-Nr.: / Disegno No: CAD100798									Blatt / Pagina 1/2	
Conducta AG Stegackerstrasse 6 CH-8409 Winterthur Tel. +41 (0)52 234 51 51 Fax. +41 (0)52 234 51 50						Dokument Typ / Tipo di documento - / -		Format / Formato A3		Masstab / Scala 1:50

This reproduction is intended for the use of the document as a reference only. It is not a contract. The user is responsible for the correct use of the information provided. The user is responsible for the correct use of the information provided. The user is responsible for the correct use of the information provided.



Rev.	Änderung / Modifiche	Datum	Geändert
A	-	11.03.2022	gde
n.a.	n.a.	n.a.	n.a.
n.a.	n.a.	n.a.	n.a.

Material / Materiale	fab	Crez / Disegn	13.10.2021	Mac	21/03/2021	gde	Flieg / Rilasc	n.a.	Status	Wird bearbeitet	Rev	A
												
Benennung / Bezeichnung / Description Absetzbecken / - ASB40 / - PI-Nr. / Disegno No: CAD100798 Document Typ / Tipo di documento -/-												
									Format	A1	Massstab	1:25
											Gewicht / Peso	3533.345
											Blatt	2/2